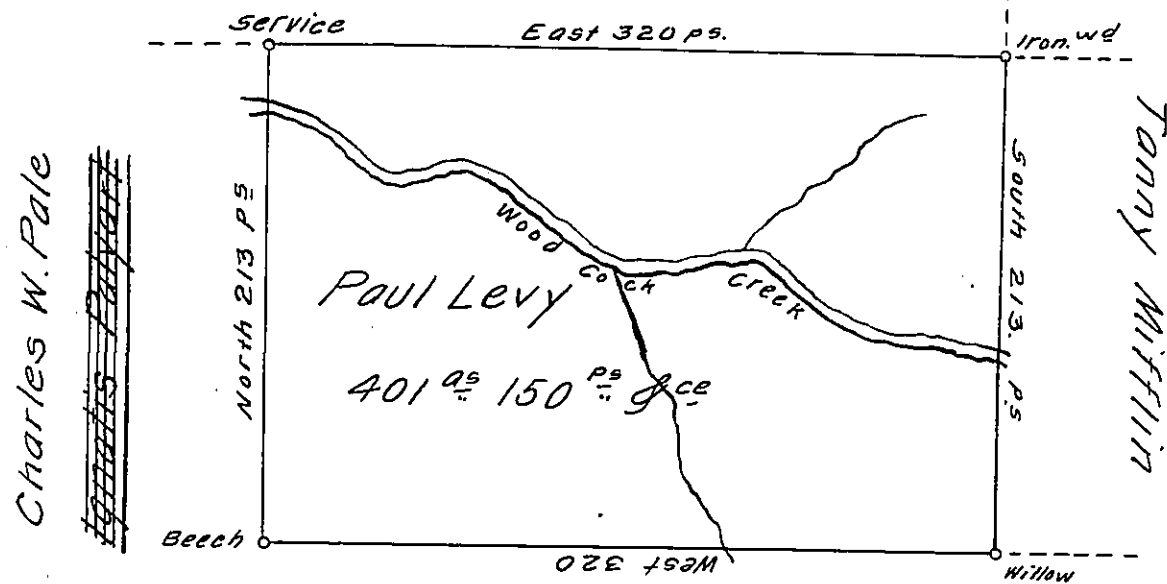


George ~~Levy~~ Mead



Christi ~~Levy~~ Leyb(lob)it

Situate on the East side of French Creek in Allegheny County: Containing 401 ac and 150 ps and Allowance of Six per Cent for Roads &c. Surveyed the 16th day of May 1794 In Pursuance of a Warrant dated the 10th day of April 1793.

To Daniel Brodhead Esq^r } W^m Power. D^y. S^r
 Surveyor General. }

IN TESTIMONY that the above is a copy of the original remaining on file in the Department of Internal Affairs of Pennsylvania, made conformably to an Act of Assembly approved the 16th day of February, 1833, I have hereunto set my Hand and caused the Seal of said Department to be affixed at Harrisburg, this eighteenth day of March 19/2.

Henry Howell
 Secretary of Internal Affairs.